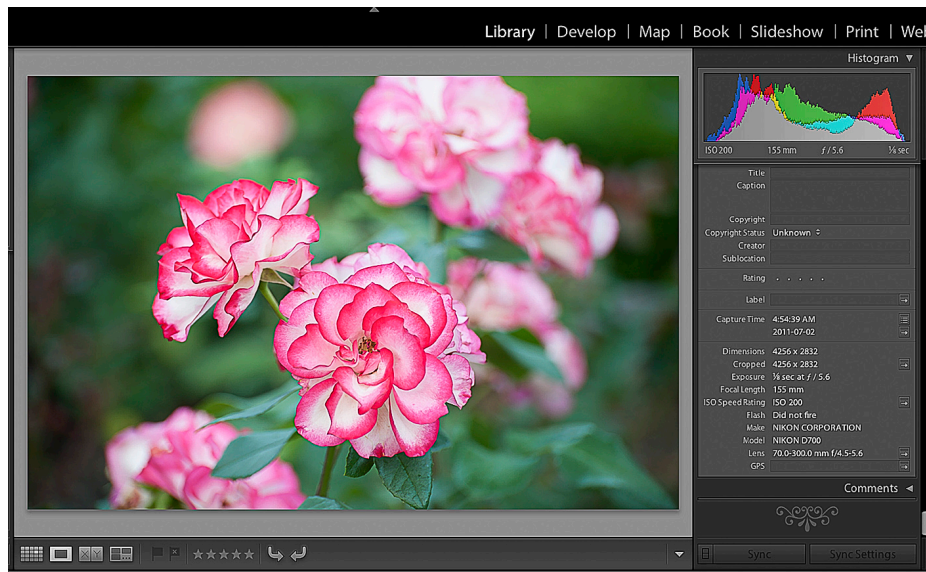




ROSE STUDY UNFINISHED: A PAINTED SKETCH by CAROLYN FRANCIS-SCOBIE



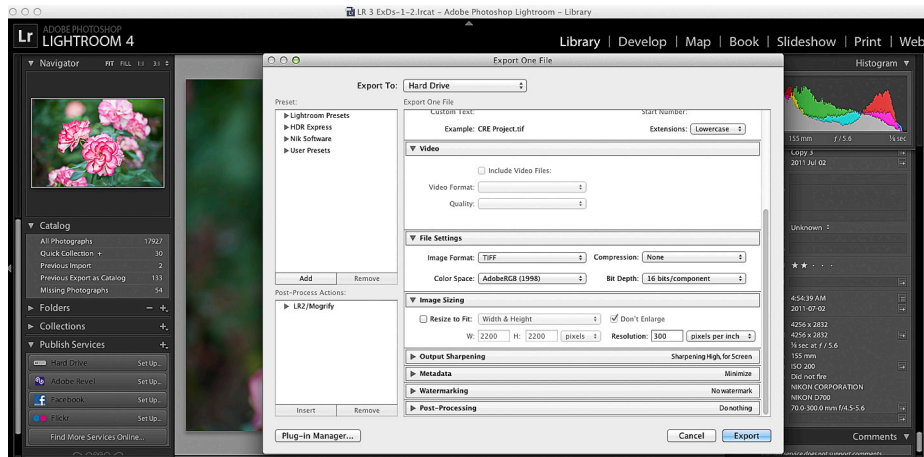
1 How To Do A Painted Sketch using Softwares: LR4+Gimp+OnOne



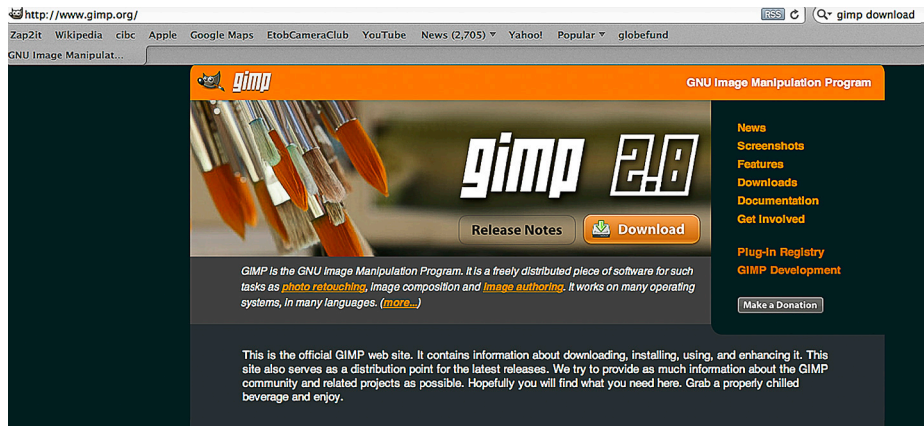
2 Nef Image with Metadata



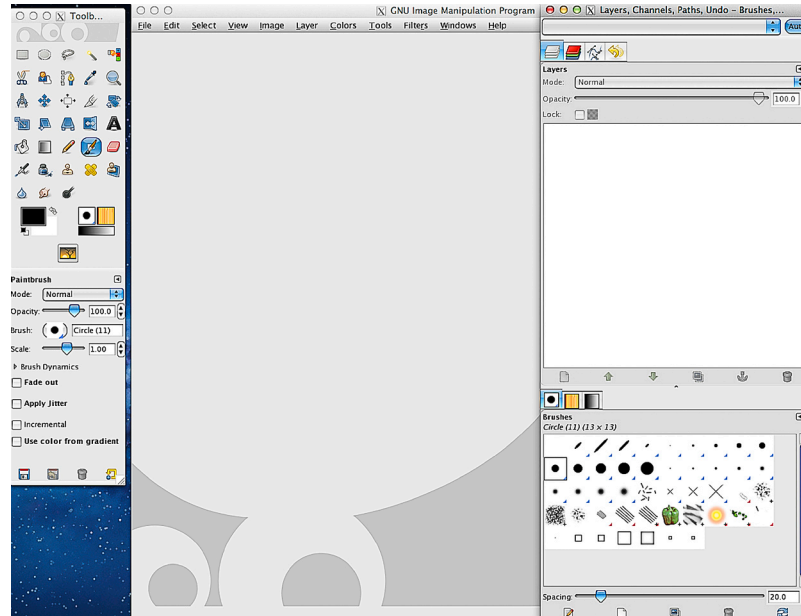
3 First Crop



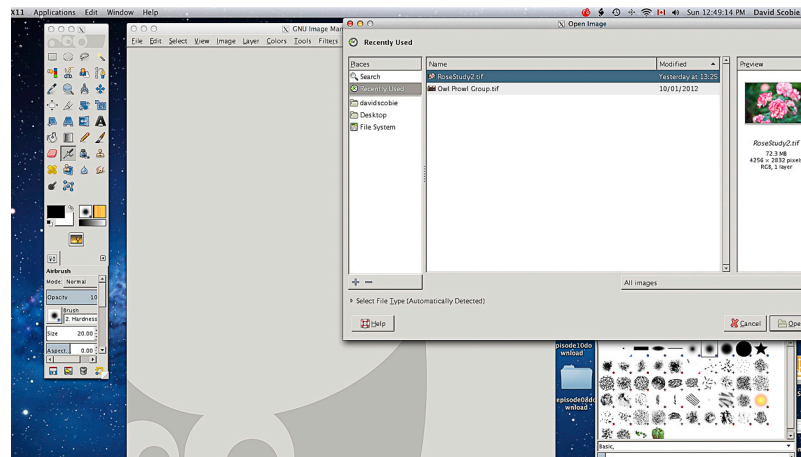
4 Export > Desktop from LR as TIF



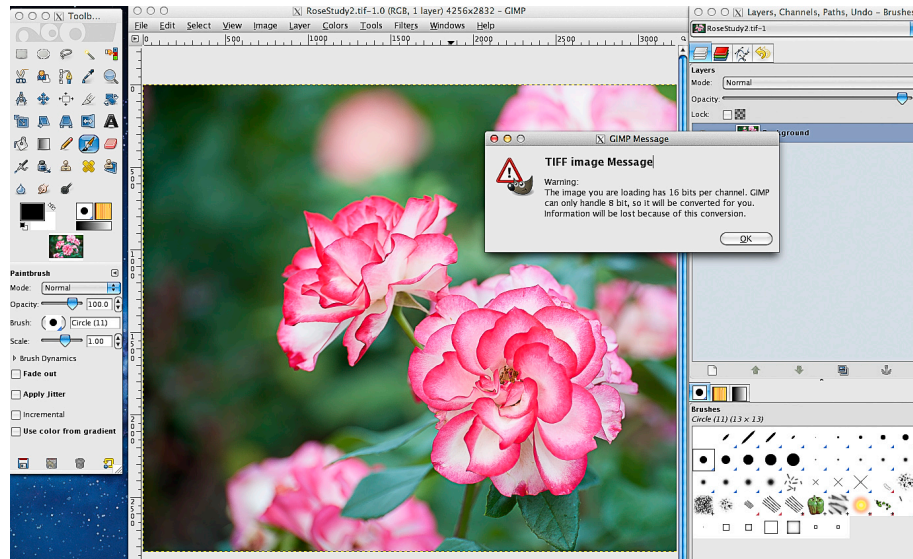
5 Download Gimp Software+dock icon



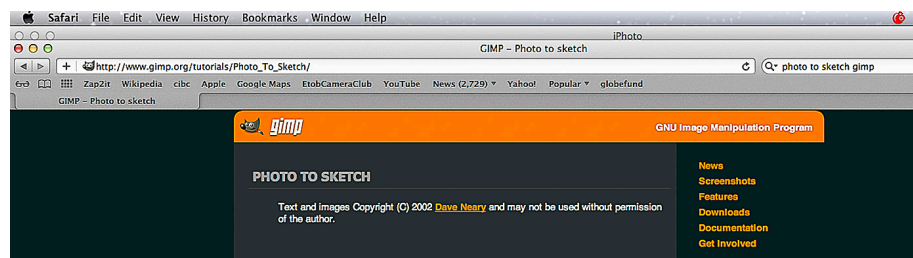
6 Open Gimp



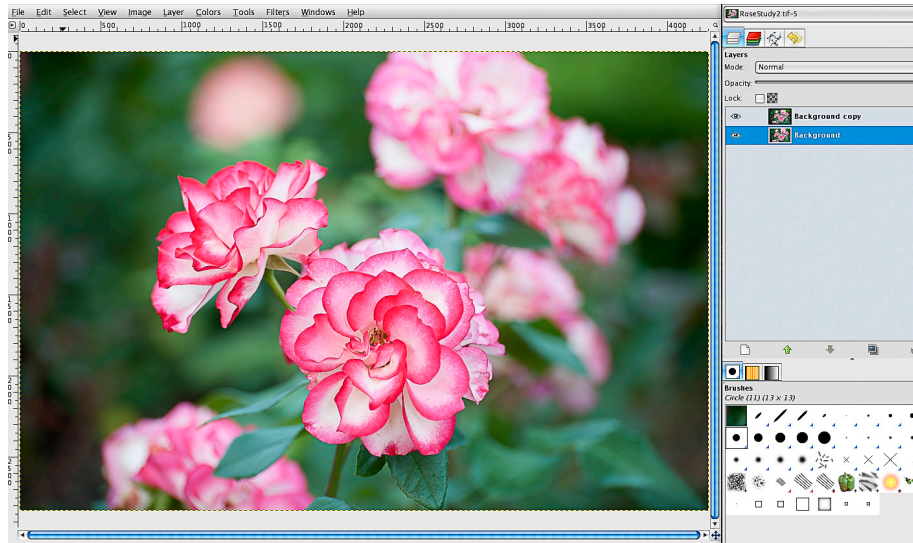
7 Go >File >Desktop >Select TIF



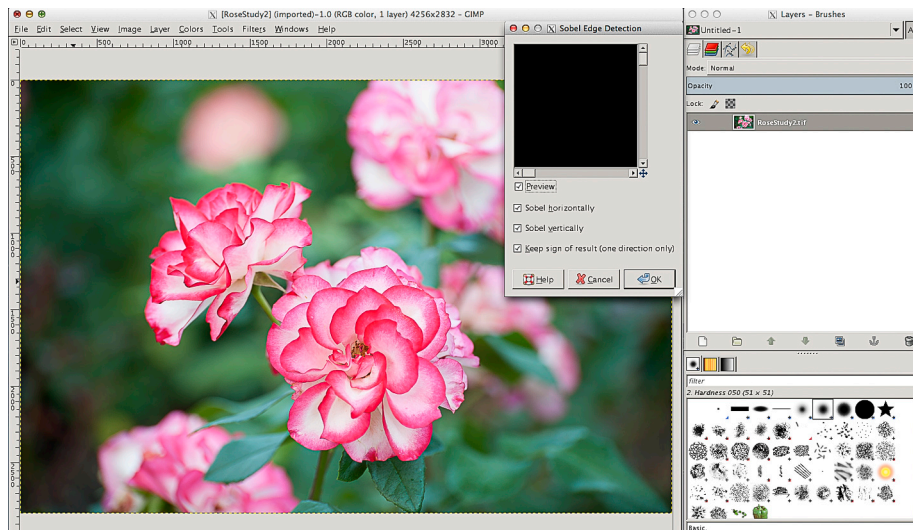
8 Gimp Warning Message



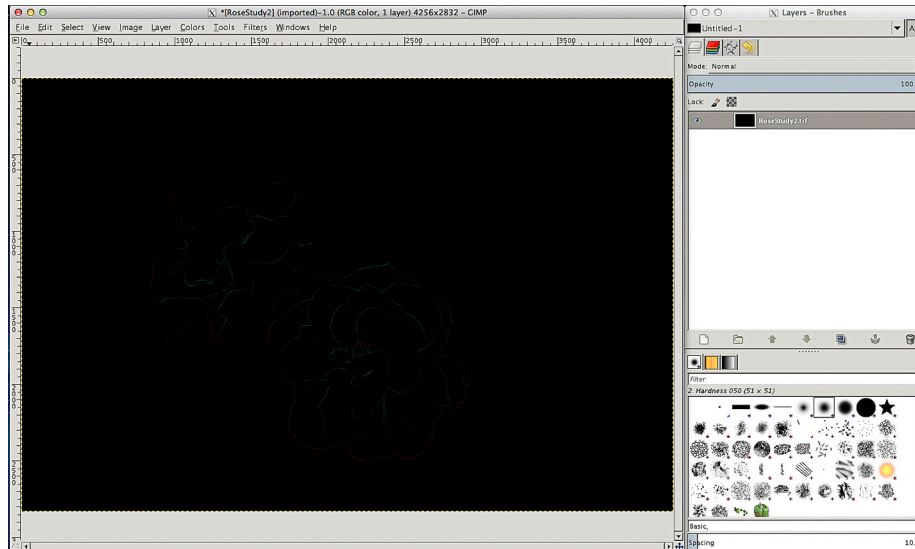
9 Photo to Sketch Tutorial (11Steps) http://www.gimp.org/tutorials/Photo_To_Sketch/



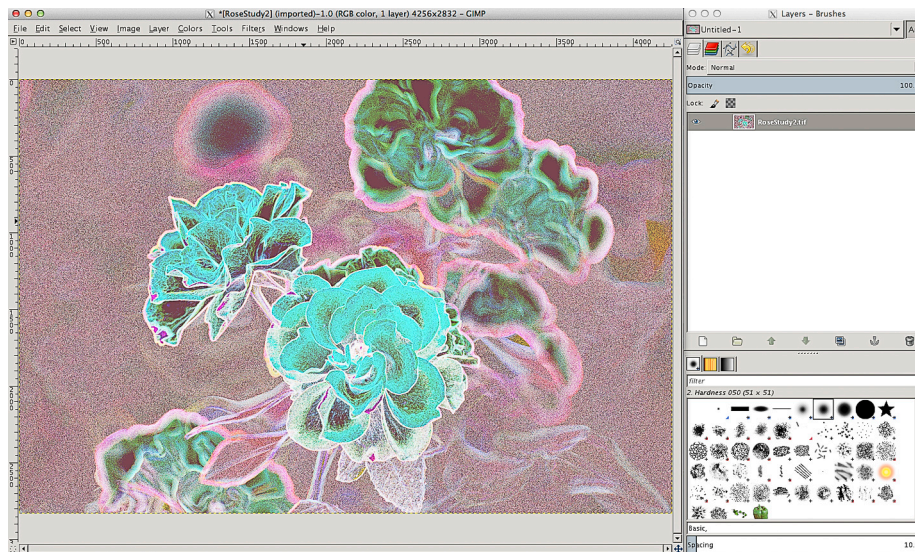
10 Highlight Background Layer for steps 1- 4



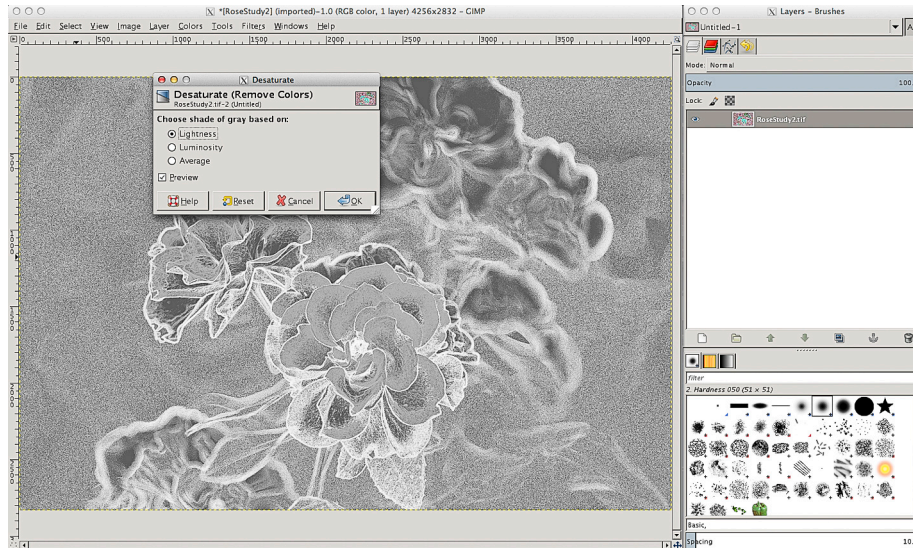
11 Go >Menu Bar >Filters >Edge Detect >Sobel



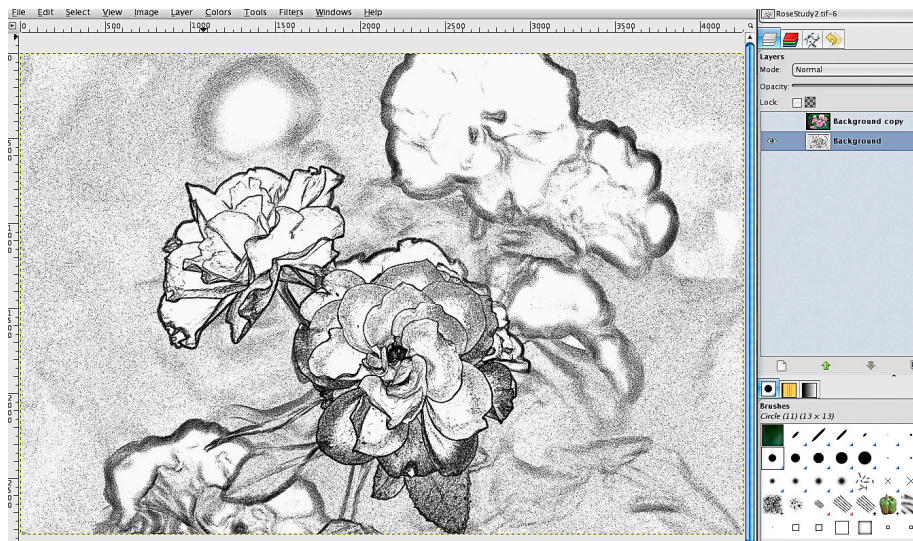
12 Sobel Filter (result shows black lines)



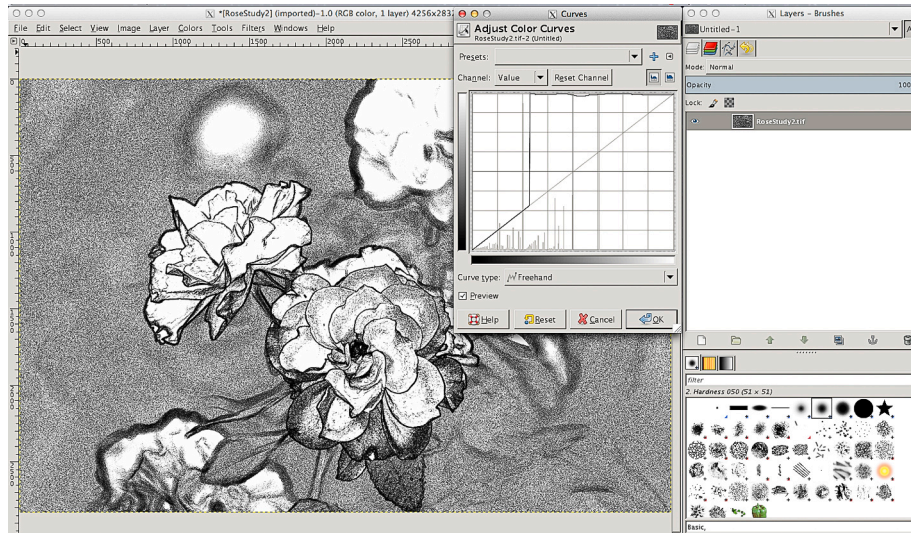
13 Go >Colours >Auto >Equalize (result shows pastel colours)



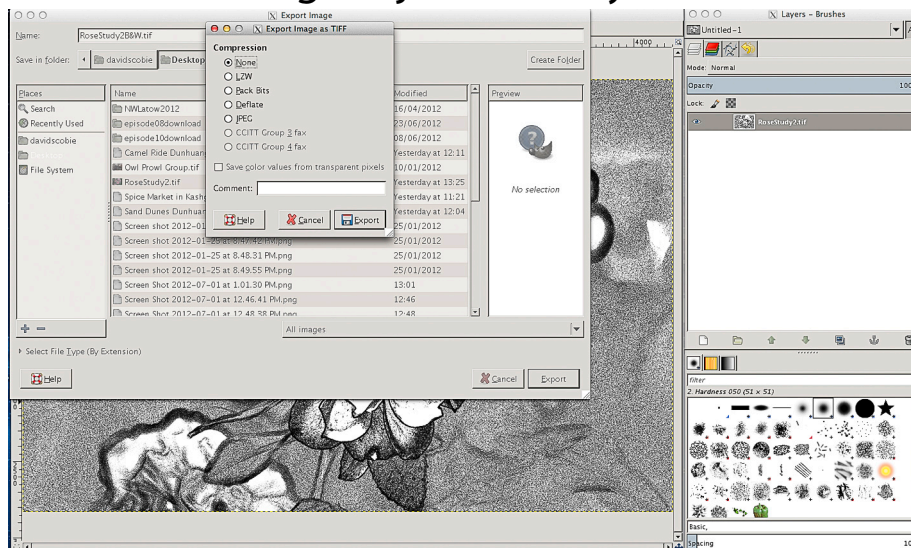
14 Go >Colours >Desaturate +Choose shade of gray - Lightness (result shows white lines)



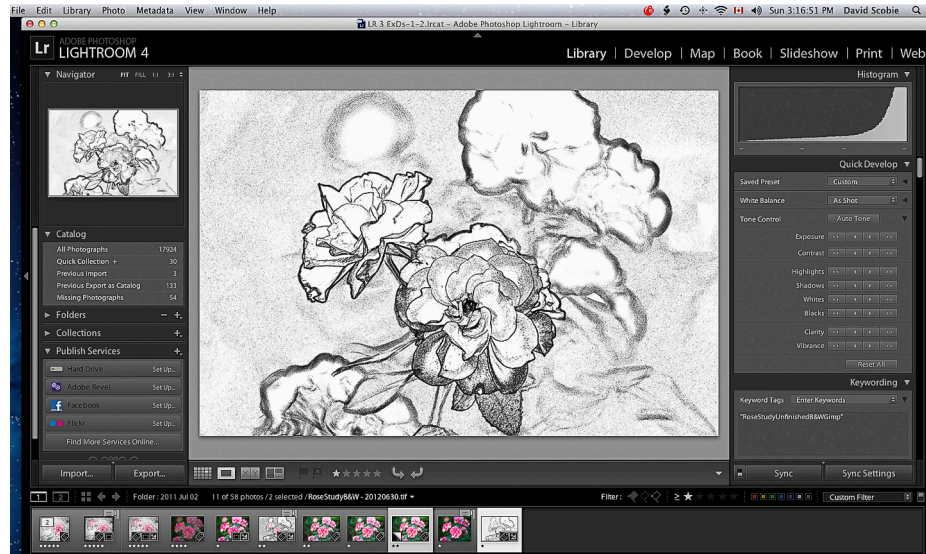
15 Go >Colours >Invert (result shows black lines)



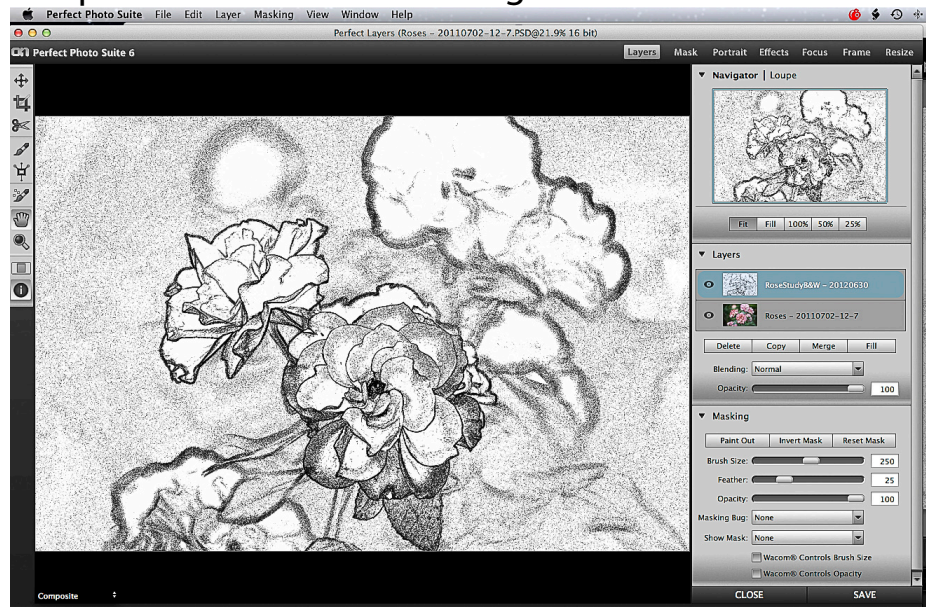
16 Go >Colours >Curves+Choose Curve Type - Freehand >drag+adjust tonality to taste.



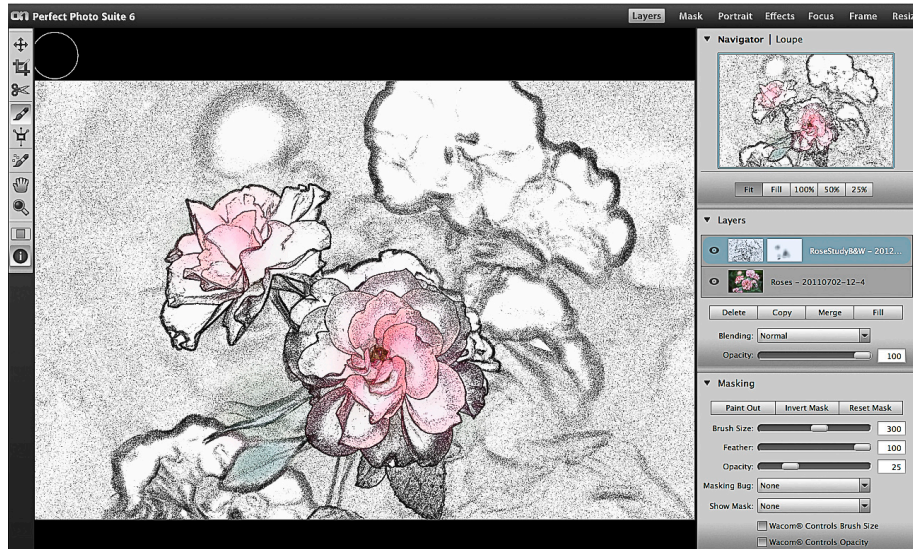
17 Export Gimp B&W >Desktop + Select Compression - None



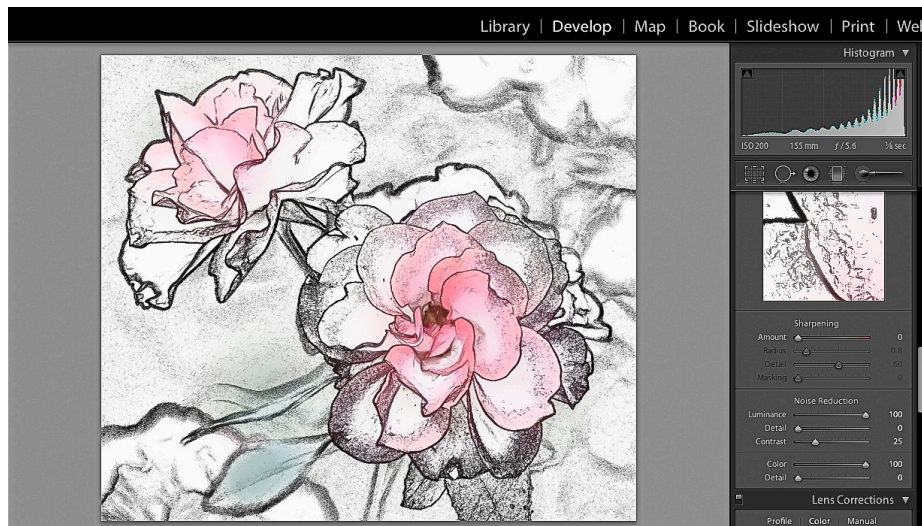
18 Open LR+Import Gimp B&W from Desktop. Select Gimp B&W+Nef. Go >File >Plug-in Extras >OnOne.



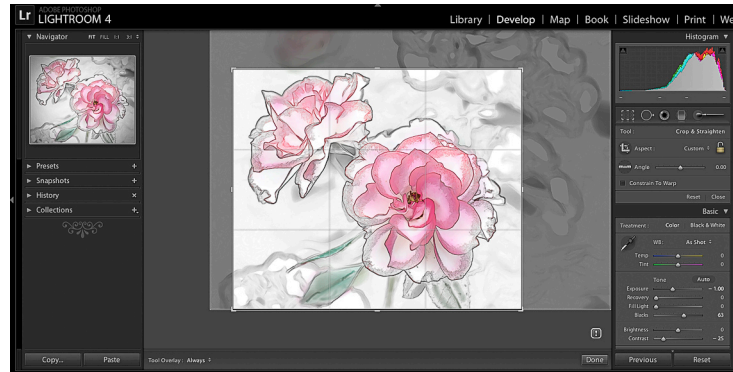
19 Nef & B&W open in Perfect Layers in OnOne.



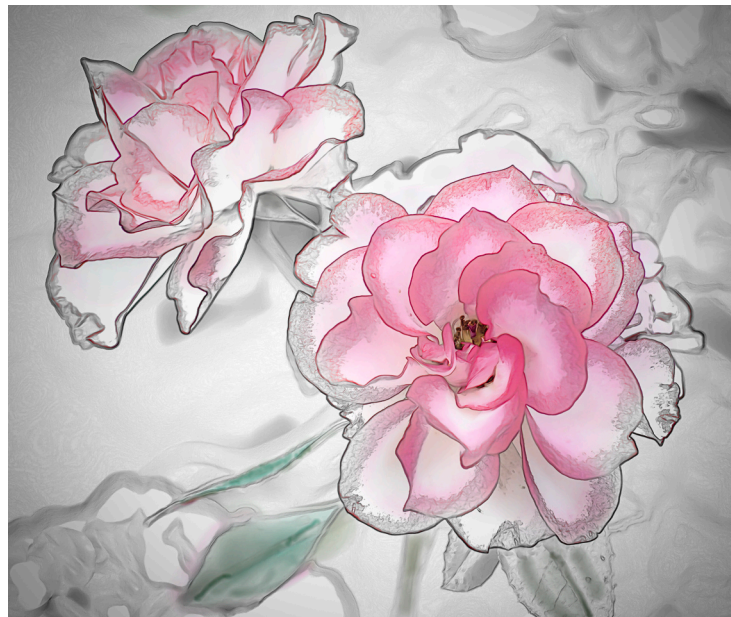
20 Select Masking Brush+Set opacity low (25) with soft feather+Paint Out. Save >LR.



21 Do Finishing Touches including NR



22 Final Crop - optional



23 Finished Sketch

